

Features

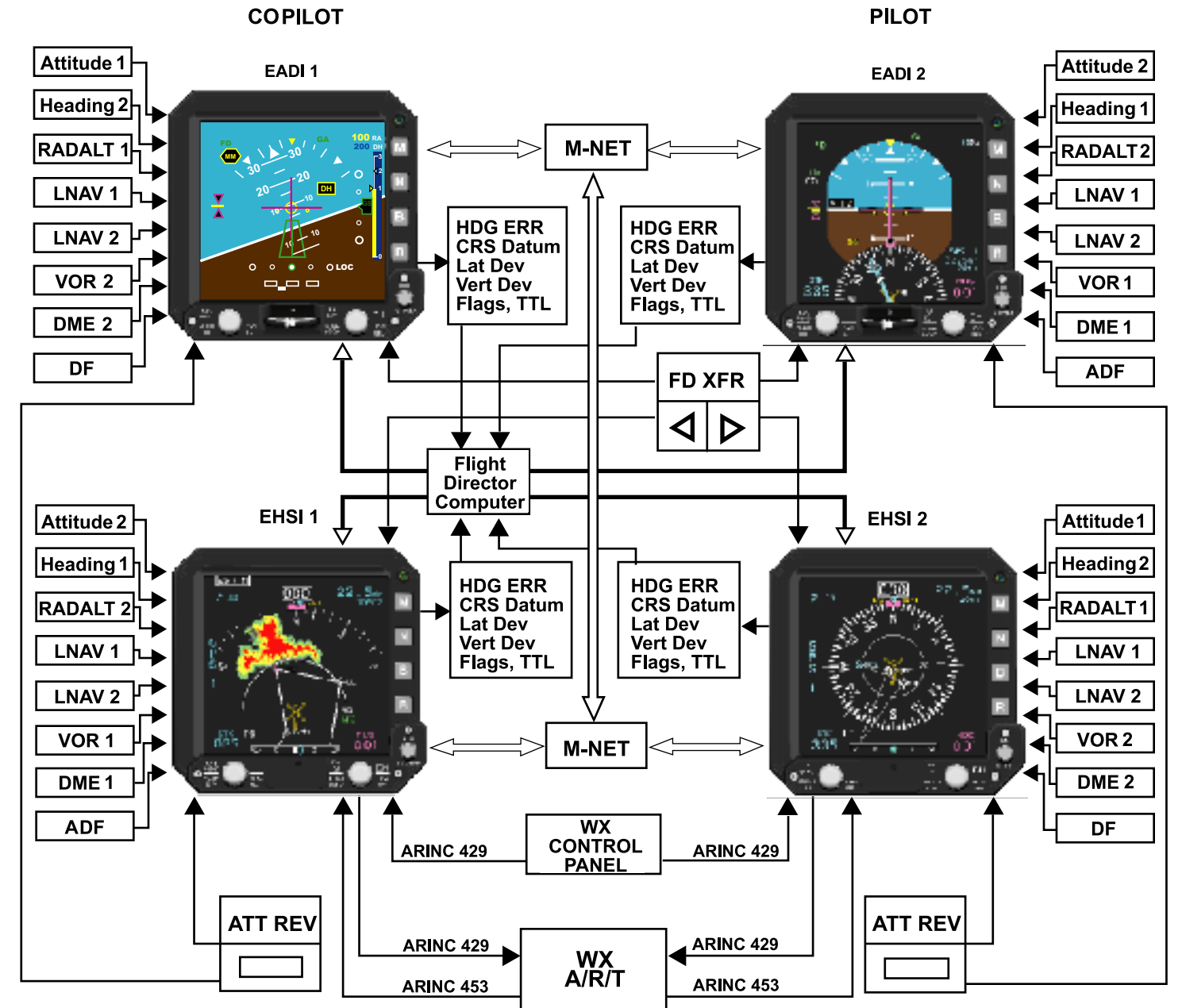
- Highest Quality AMCLD
- Configurable for Dual EFIS(EADI/EHSI), Single EFIS, Single EHSI, Dual EHSI, and single MFD
- Self-contained (no separate Symbol Generator)
- Fully Analog and Digital Interfacing (Open Architecture)
- Bezel Controls and/or Remote Panel
- Fully reversionary with Cross Cockpit Monitors
- Easy on-screen Configuration
- Fixed Wing or Rotorcraft configuration
- Easy on-screen total system maintenance and diagnostics
- TCAS I and II Display
- IVSI for Vertical Speed and TCAS Resolution Advisories
- EGPWS Terrain Display
- ARINC 708 Weather Radar
- GPS Routing / Moving Map
- Composite modes on both EADI/EHSI
- Wind shear Annunciations
- Rate of Turn
- Fast /Slow
- Vertical FMS/GPS Navigation
- RVSM compatible

Options

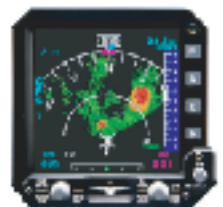
- NVG Compatible
- Remote CRS/HDG Control Panel
- SAR
 - Doppler Radar Hover Mode
 - Expanded ADI Pitch indications
 - ADF Deviations

Frequently Asked Questions

- **Configurable for Dual EFIS(EADI/EHSI), Single EFIS?**
 - Single EHSI, Dual EHSI, and single MFD
- **Is there a separate symbol generator?**
 - No, EFIS 520 is self contained.
- **Does the unit have reversionary capability?**
 - It is fully reversionary with Cross Cockpit Monitors
- **How difficult is it to install?**
 - EFIS 520 has on-screen diagnostics and configurations to aid in installation.
- **Can it display TCAS II Resolution Advisories?**
 - Yes, EFIS 520 provides an IVSI with TCAS II Resolution Advisory commands.
- **Can the EFIS display WX data?**
 - Yes, EFIS 520 can display most digital ARINC 708 WX information.
- **Can EFIS display vertical navigation information from GPSIFMS?**
 - Yes, EFIS 520 displays vertical Navigation for enroute, terminal, and approach modes.



Full Screen ADI (Expanded Rad Alt)



Weather Radar, GPS Routing, IVSI



EGPWS Terrain Display



TCAS I and II with Resolution Advisory

EFIS 520 includes all the above and adds digital situational sensors and Nav sources, windshear, Fast/Slow, Rate of Turn, digital Rad Alt, Digital AFCS, EGPWS terrain, increased architecture configurations, TCAS I, TCAS II, Airdata (vertical Speed) and TCAS resolution advisory capability input configurations.

SPECIFICATIONS

- Weight 7.75 lbs. max
- Power +28 V DC (44 watts max)
- Symbol Generator Self-contained
- Display Color active matrix LCD
- Aircraft Interface Analog/Digital
- Aircraft Application Flexible On-screen configuration (Same part number)
- Maintenance Full-time BITE/On-screen Diagnostics
Easy R&R configuration
- Form ARINC 408 5ATI (5"x5"x9.7")
- Connectors (3) MIL-C-38999 Series III (79 pin)
- Reliability 5,000+ hours MTBF

CERTIFICATION STANDARDS

- DO-178B Level A software application
- DO-160D Level environmental qualification test
- HIRF 200v/m, Lightning-Category A3
- HMI 10⁻⁹ (total system)
- TSO Certifications: C3d, C4c, C5e, C6d, C8d, C9c, C34e, C35d, C36e, C40c, C41d, C52b, C63c, C66c, C67, C87, C92c, C113, C117a, C118, C119b, C129a, C147, C151a.

HARDWARE

- Signal Processing
 - Embedded microprocessors, microcontrollers, DSPs, Motorola

I/O INTERFACES

General I/O Capability: Analog Synchro (XYZ,Sin/Cos), Variable AC/DC, Discretes, and Digital ARINC 429, 419, 453, M-bus, RS-232, GPS/FMS

System	Configuration	Architecture	I/O type	Typical Brand types
• Radios	Single or Dual	Analog or Digital		Pro-line II, Bendix/King Silver Crown, Garmin 430/530
• ATT	Single or Dual	Gyro (VG & DG Synchro) , AHRS (429), INS (429)		LITEF, Collins AHRS, Honeywell INS, Honeywell C-14a, BFGoodrich VG-208
• VOR/ILS	Single or Dual	Synchro (XYZ or Sin/Cos), ARINC 429		Proline and Silver Crown - Collins VIR-32, Bendix/King KX-165, KN-40, KN-53
• MB	Single or Dual	Analog or ARINC 429		Bendix/King KR-21
• ADF	Single or Dual	Analog or ARINC 429		Collins ADF-60A, Bendix/King KR-87
• DF	Single	Analog or ARINC 429		Chelton DF-931
• DME	Single or Dual	ARINC 419/568		Collins DME-42, Bendix/King KDM-706A
• TACAN	Single or Dual	Synchro or ARINC 429		Honeywell AA 300z/KRA-405, Collins Rad
• Rad Alt	Single or Dual	Analog or ARINC 429		
• Wind shear	N/A	Discretes		
• TCAS I or II		ARINC 735 Compliant		Honeywell TCAS II, Collins TTR-920, ACAS, TCAS I, Ryan TCAD, and more
• TAWS		ARINC 453 Wx compliant output, ARINC 429 input		All Honeywell EGPWS, ACSS T2CAS, and many more.
• LNAV	Single or Dual	ARINC 429 (On - screen configuration for all listed)		CMC electrons CMA900 FMS, Bendix/King KLN-90B GPS, Garmin 155/165, Garmin 430/530, Trimble 2101 I/O Approach GPS, Racal AMS-2000 FMS, Universal UNS-1C FMS, Global/Honeywell GNS-XLS FMS. KLN-900, zNADIR
• Weather Radar		ARINC 708 Compliant		Bendix/King RDR-2000, KLN-1400C with ARINC 453 I/O
• AFCS	Single or Dual	Analog or Digital AP / FD		Honeywell FZ-702, KFC-400, KFC-500

Defining Innovation for Cockpit Avionics

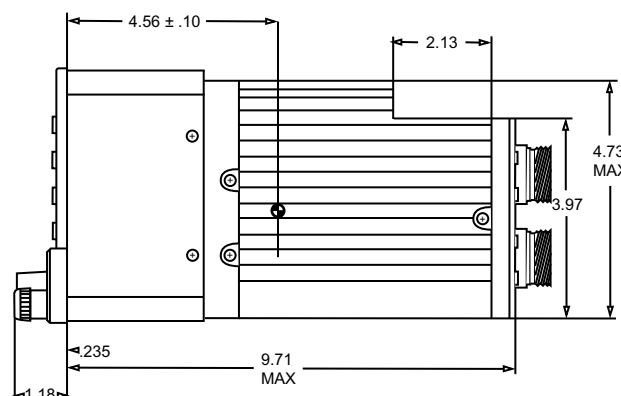
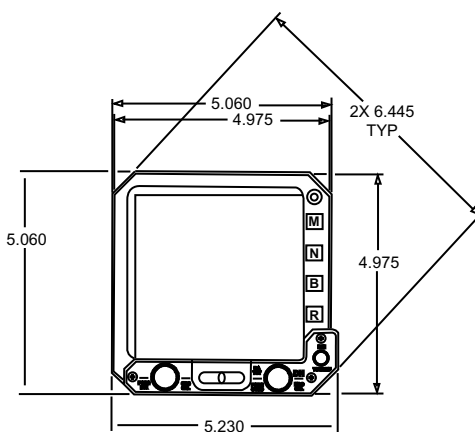
Rogerson Kratos integrates technologies to provide solutions for aircraft flight, instrument and navigation displays. Our blend of skills and our commitment to specialization in the cockpit has produced the NEOAV family of flight display products - designed to provide maximum value and safety



EFIS 520 is the newest most versatile member of the Rogerson Kratos NEOAV product line. The NEOAV™ 500 EFIS series is the foundation of a family of AMLCD display products and is designed to grow with the increasing information needs of aircraft cockpits in the digital age. The EFIS 520 includes TCAS II, EGPWS/TAWS and GPS display capabilities as standard features. Multiple options can be tailored for an application's unique needs. The flexible 5 ATI self-contained plug-replaceable unit is designed to be inter-changeable with most aircraft primary flight indicator systems, requiring no separate hardware or aircraft wiring modifications. In addition, the system upgrades an aircraft's capabilities by offering integration with multiple aircraft situation awareness systems. Advantages of the NEOAV EFIS series over less robust cockpit solutions, include increased safety, improved human factors, lower power, and lighter weight.



Rogerson Kratos leads the way in providing an outstanding product line of instruments, active matrix liquid crystal display systems and other aerospace products for helicopter applications



CONTACT

Rogerson Kratos Marketing
2201 Alton Parkway
Irvine, CA 92606

1.949.442.2364
rksales@rogerson.com
www.rogersonkratos.com

